

RESTLESS LIVING

"... restlessly dedicated to contemporary living."



VOLUME 152

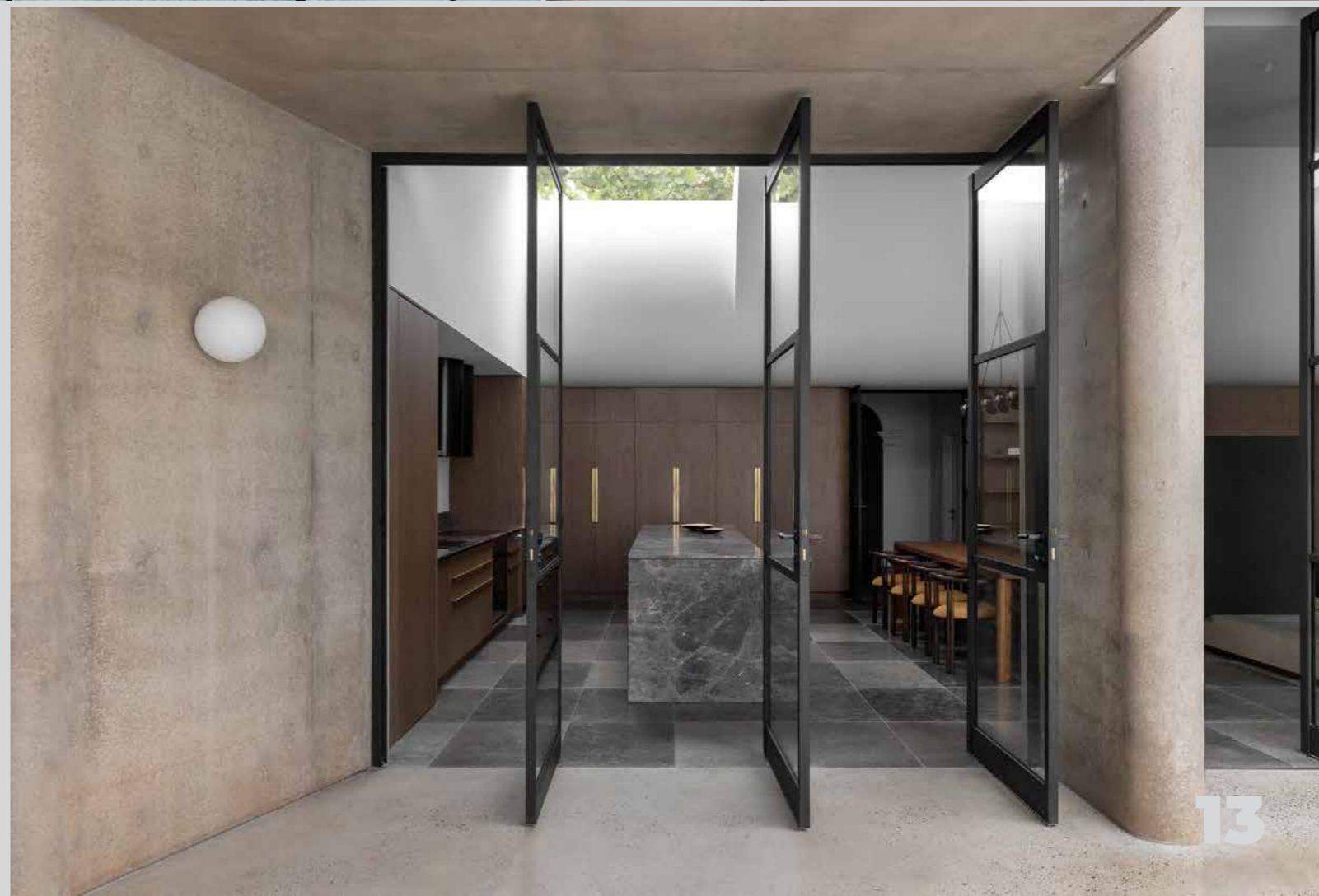


ROSE PARK HOUSE

Rose Park, Australia

Highly resolved in its plan, Rose Park House is the outcome of a renovation with a meticulous attention to detail where old and new meets, and where each room harmoniously aligns feeling and function through the use of color and materiality.

“The Rose Park House is best described as a project of discovery from commencement to completion. From the street this early 1900s Queen Anne Villa appears like any other, however beneath the surface lies a series of spaces designed to be unique in their function and expression, yet consistent in their approach, resulting in an Architecture that is completely unexpected”, Director at Studio Gram, Dave Bickmore, says. Once the early assessment of the existing house proved that the original walls of the dwelling were in fact constructed from off-form concrete, Dave and his team were surprised as it made the building unique for its age and location. “This discovery served as a key material direction of the project. To maintain the integrity of the original dwelling, only subtle changes in plan were made to incorporate a master wing including walk-in-robe and en-suite. The central corridor maintains the original spatial arrangement of the home and leads one on a path of discovery”, Dave explains.





When Dave saw the existing pool for the first time, there was no love at first sight. Yet, the introduction was important since the pool became a key driver for the design. “The gentle curves of the pool served as a key inspiration for the sculptured forms found throughout each of the spaces. As a subtle homage to the pool, its curved forms, and the role it played in the aesthetic direction of the project, the pool motif has been inscribed into the pelmet within the front sitting room”, Dave notes. Through the extension, Studio Gram created a moment of revelation to the old 1900s Queen Anne Villa. “A billowing form becomes the transition between the original dwelling and the extension, celebrating the coming together of old and new. The curved bulkhead feels weighty yet soft and is an example of compression and release in action. Apertures in the walls and ceiling creates a connection between the sky and the garden, allowing a moment for its occupants to witness the ephemerality of the garden and its seasonal change”, Dave elaborates.

Almost like a sculpture, the Rose Park House presents the unexpected; a place reminding oneself of the interplay between time, space, light, color and mass; a place inviting warmth and shadow, where forms become the focal point.

Architecture by **Studio Gram**

Photography by **Timothy Kaye**



16



17